



Insects Mistaken for Mosquitoes

www.ReportMosquitoes.org

Midge



1/2 In.
Actual Size

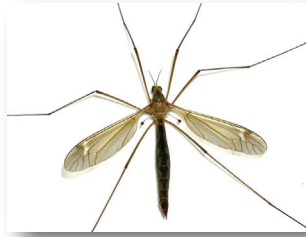


- About the same size as a mosquito
- Cannot bite
- Develops in mud on bottoms of lakes, ponds, spreading basins, and flood control channels
- A problem from spring to fall
- Known to swarm

Common Crane Fly



1/2 - 2 In.
Actual Size



- Much larger than a mosquito
- Cannot bite
- Does not eat mosquitoes
- Develops in moist soil or water
- A problem from early spring to fall

Black Fly



1/8 - 1/4 In.
Actual Size



- Smaller than a mosquito
- Painful itchy bite, but does not transmit diseases to humans in California
- Breeds in flowing streams and rivers
- A problem in spring and summer

Fungus Gnat



1/8 - 3/8 In.
Actual Size



- About the same size as mosquito
- Cannot bite
- Develops in fungus or moist decaying vegetation
- A problem from winter to spring
- Known to swarm

Mosquito



1/4 - 1/2 In.
Actual Size



- Usually bite from dusk to dawn, but some can bite during the daytime
- Only female mosquitoes bite and take blood meals
- Develops in containers or plants that can hold stagnant water
- A problem year-round when it is warm
- Can transmit viruses that can make us sick

Greater Los Angeles County Vector Control District

www.glacvcd.org

/vectorcontrol

/GLACVCD

16320 Foothill Blvd.
Sylmar, CA 91342
818-364-9589

12545 Florence Ave.
Santa Fe Springs, CA 90670
562-944-9656

